

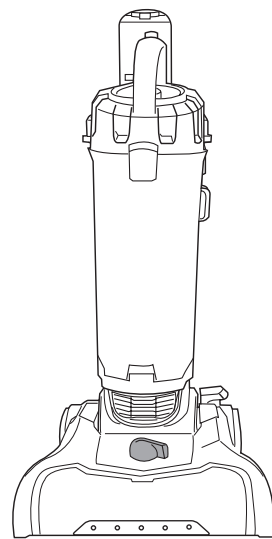


TurboExtract™

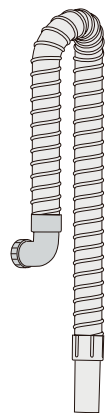
QUICK START GUIDE



WHAT'S INCLUDED IN THE BOX



Element EV Lyte Vacuum



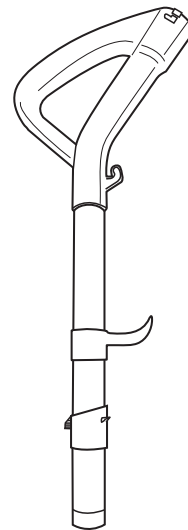
Hose



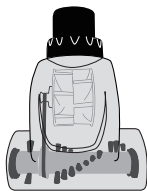
Upper Cord Hook



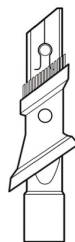
Lower Cord Hook



Handle

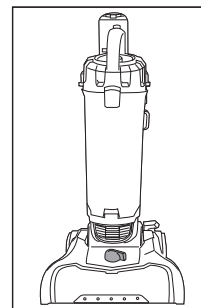


Pet (H)airBrush Tool

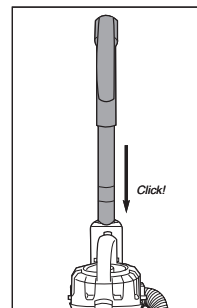


3-in-1 Tool

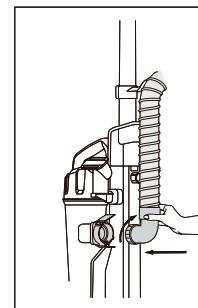
HOW TO ASSEMBLE YOUR VACUUM



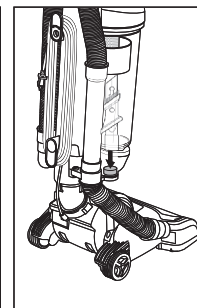
Vacuum cleaner with dust cup.



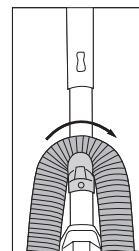
Slide handle into top of vacuum cleaner. Push down until it clicks.



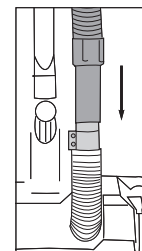
Insert bent end of hose into opening at back of dust cup. Twist hose clockwise to lock.



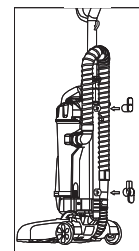
Insert the 3-in-1 accessory into the onboard storage reservoir as shown above.



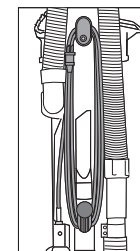
Loop hose over hose retainer.



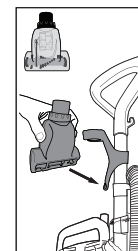
Push loose end of hose securely onto hose inlet.



Align upper and lower cord hooks and press to snap in place. Upper cord hook should rotate freely.

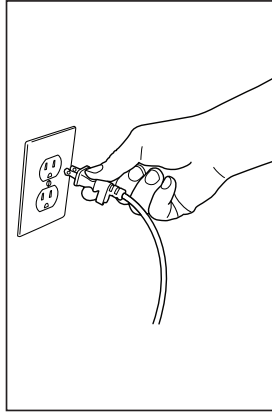


Wrap cord onto upper and lower cord hooks.

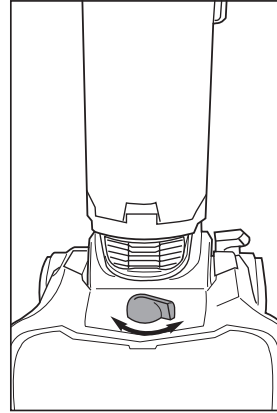


Store Pet (H)airBrush on front of handle. Align brush opening with slot and push to snap tool into clip.

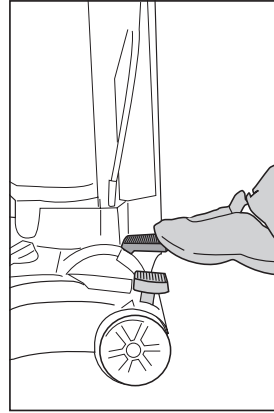
HOW TO USE YOUR VACUUM



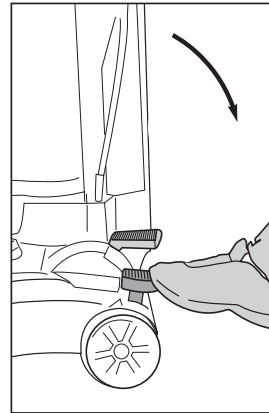
Plug power cord into outlet.



Turn height adjustment knob to adjust from bare floors high pile carpet.

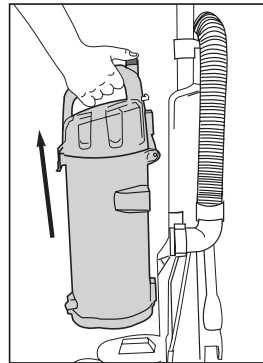


Step on power switch to turn vacuum cleaner on. Step on again to turn off.

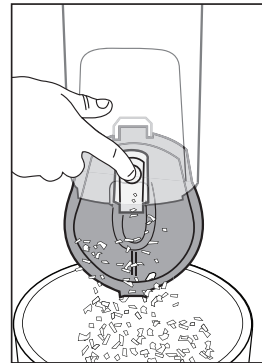


Step on handle release to lower handle into position for vacuuming floors.

Empty dust cup after every use.



Press release button and lift off dust cup.

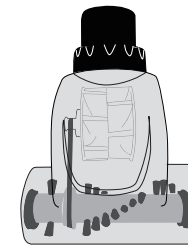
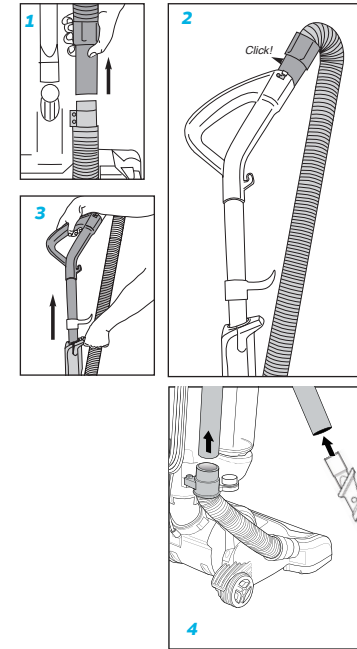


To empty debris, press lever to release bottom lid.

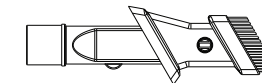
HOW TO USE YOUR ACCESSORIES

Caution: When using tools, always place handle in upright position. Make sure vacuum cleaner is turned off while attaching tools.

- Place vacuum in upright position.
- Turn height adjustment knob to highest position.
- Pull up on hose connection to release hose end from hose inlet (Fig. 1).
- Push end of hose into top of handle and twist clockwise until it clicks (Fig. 2).
- Press handle release latch and pull out handle with wand (Fig. 3).
- To attach accessories, push desired tool onto end of wand or hose (Fig. 4).



Pet (H)airBrush
Use to remove pet hair from stairs, carpet and upholstery.

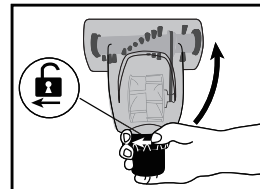
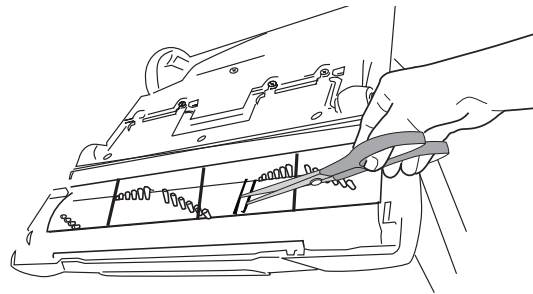
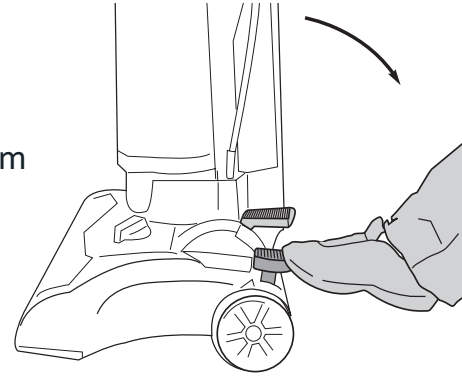


3-in-1 Tool
For vacuuming in narrow and hard-to-reach places

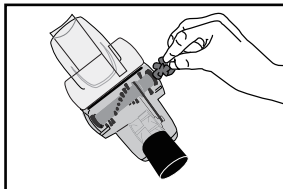
HOW TO MAINTAIN BRUSHROLL

Caution: Make sure vacuum is turned off and power cord is unplugged.

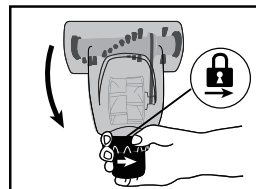
- Step on handle release to lower handle.
- Turn vacuum face down on floor.
- To avoid unnecessary service calls, check brushroll for debris.
- Use scissors to clip heavy threads or strings.



Grasp collar and twist to unlock cover. Lift cover up.



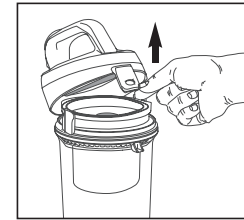
With cover open, use fingers or small brush to clear accumulated pet hair from bristles.



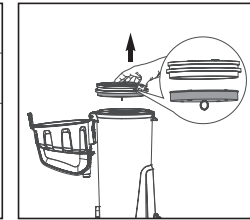
Close cover and twist collar to lock.

HOW TO MAINTAIN FILTER

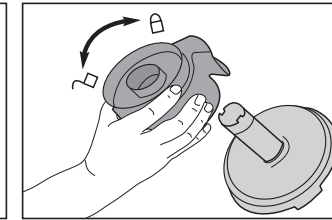
Clean dust cup filters monthly



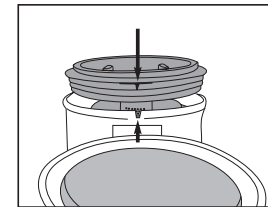
Pull dust cup latch to lift up dust cup lid.



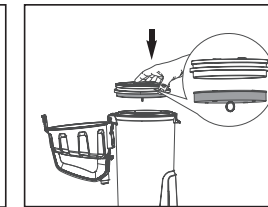
Lift out foam filter and shake off dust. Rinse foam filter and dry thoroughly.



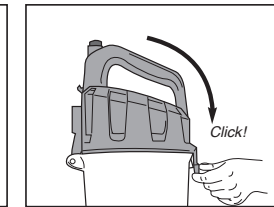
Grip tabs and lift out filter screen. Twist bottom of filter screen counterclockwise to unlock and pull apart. Shake off dust. Rinse screen and dust cup. Dry all thoroughly. Reassemble screen, twist clockwise to lock.



Align tab on filter screen with slot on back of dust cup and drop into position.



Reinstall foam filter



Close cover until it clicks.

Warning: Never operate vacuum cleaner without foam filter, filter screen and dust cup in proper position.

